



Catalogue of

MOBILITY OPTIONS FOR STUDENTS

within the Erasmus+ programme



2023/2024

This catalogue for students was prepared by the **International Relations Office of UPJŠ**.

In case of questions, feel free to contact your Erasmus coordinator or the International Relations Office of UPJŠ.

International Relations Office UPJŠ

Ground floor, door no. 6

Šrobárová 2

041 80 Košice

www.upjs.sk/en/international-relations/





CONTENTS

01 STUDY

- 1.1 Long-term mobility (6)
- 1.2 Blended intensive programmes (8)
- 1.3 Short-term PhD mobility (11)
- 1.4 Short-term mobility of 1st and 2nd cycle students (15)

02 TRAINEESHIP

- 2.1 Long-term mobility (22)
- 2.2 Short-term PhD mobility (25)
- 2.3 Short-term mobility of 1st and 2nd cycle students (29)

03 DEADLINES

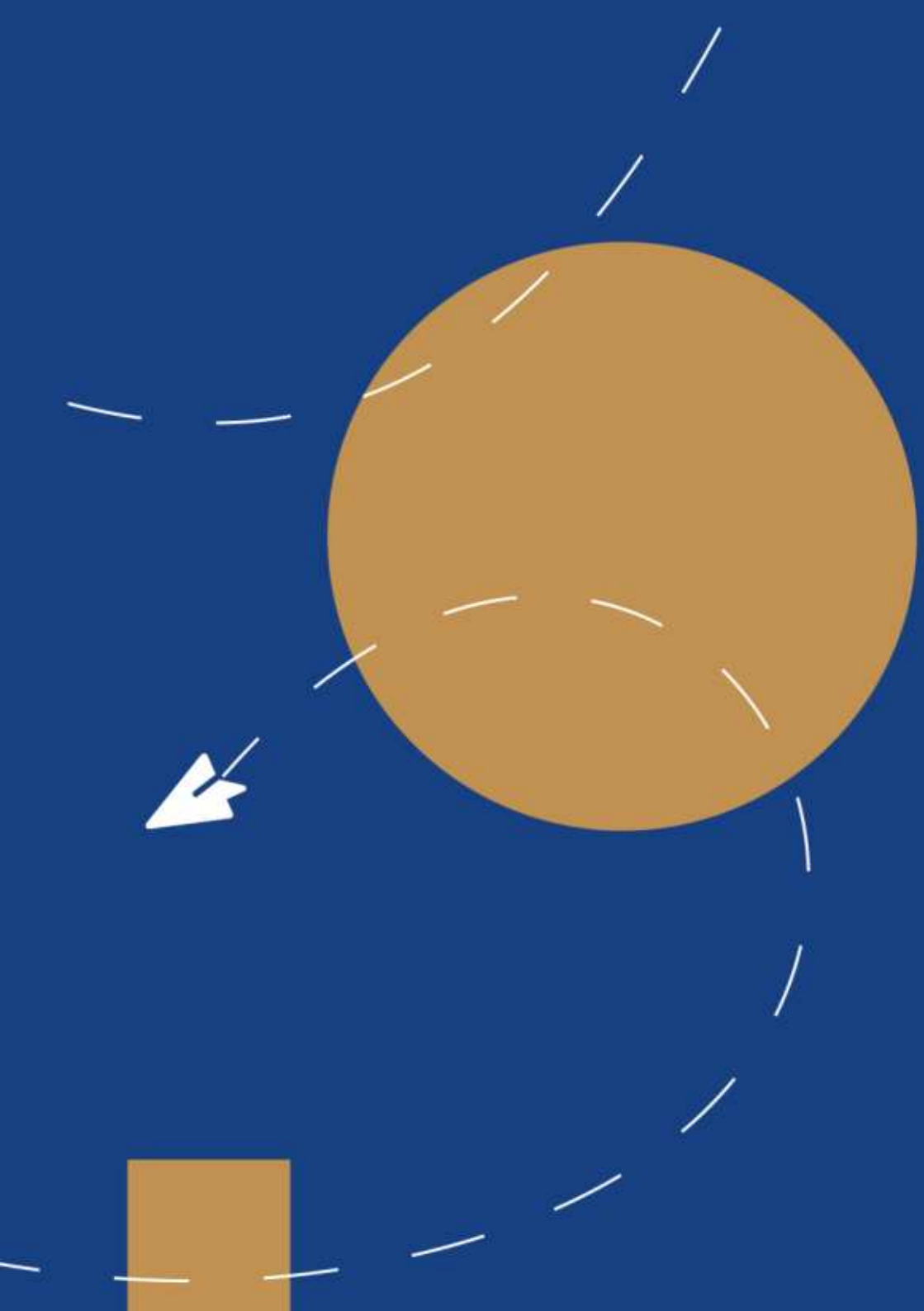
- 3.1 Application deadlines



01

**STUDY
MOBILITY**

Study stay abroad at a higher education
partner institution



1.1

LONG-TERM MOBILITY STUDY



Takes place at: higher education institutions with an Erasmus charter, with which UPJŠ has an inter-institutional agreement

Place of mobility: It is possible to travel to any university with which your study field has an [inter-institutional agreement](#).



Length of mobility: min. 2 months and max. 12 months for each level of study



Implementation period: summer semester 2023/2024



For whom: all duly enrolled full-time and part-time students from their 1st year can travel for an Erasmus+ mobility.

How many times can you travel?: The same student may participate in mobility periods totalling up to 12 months of physical mobility maximum per each cycle of study, independently of the number and type of mobility activities. In study programs combining first and second cycle, such as in medicine, student mobilities can last a maximum of 24 months. Participation in short-term and long-term mobilities, studies and traineeships within one level of study are added up and may not

exceed 12/24 months, including traineeships for recent graduates.

Is this type of mobility available for recent graduates?: No

Obligations: during a long-term mobility, it is necessary to obtain at least 20 ECTS credits per 1 semester (this obligation does not apply to PhD students).

Recognition: The earned credits will be recognized in full for the student upon return. After the mobility, it is necessary to apply for the recognition of credits according to the procedure at the individual faculties. For more information about criteria and procedures, contact your Erasmus [coordinators](#).

Grant:

Target country	Monthly study grant
Denmark, Finland, Ireland, Iceland, Liechtenstein, Luxembourg, Norway, Sweden, Belgium, Cyprus, France, Greece, Netherlands, Malta, Germany, Portugal, Austria, Spain, Italy	€674
Bulgaria, Croatia, Czech Republic, Estonia, Lithuania, Latvia, Hungary, Slovenia, Poland, Romania, North Macedonia, Serbia, Turkey	€606

Financing: Without limitation, the total length of mobility is financed.

[Contributions beyond the basic grant rates](#)

Anything extra?

Students with fewer opportunities can receive an additional contribution above the level of study grants in the amount of **EUR 250** per month.

Students can apply for the so-called "**green travel**" contribution. This is a one-time contribution of **EUR 50** in addition to the regular grant if the student uses: train, bus, shared car, bicycle as a mode of transportation for his/her trip to and/or from the mobility.

1.2

BLENDED INTENSIVE PROGRAMMES (BIP)



Takes place at: higher education institutions with an Erasmus charter, with which UPJŠ has an inter-institutional agreement for a specific BIP. The blended intensive program can only be implemented as a **Student mobility for the purpose of study**.

Place of mobility: It is possible to travel only to the university/place where a particular BIP is organized.



Duration of mobility: 5 to 30 days of physical mobility + mandatory virtual element, the

duration of mobility is determined by the BIP organizers



Implementation period: until 31.7.2024



For whom: all duly enrolled full-time and part-time students from the 1st year can travel. The target group is determined by the organizers of a particular BIP. Only those students for whom a specific BIP is organized and who are nominated by the sending institution can attend a BIP mobility.

How many times can you travel?: The same student may

participate in mobility periods totalling up to 12 months of physical mobility maximum per each cycle of study, independently of the number and type of mobility activities. In study programs combining first and second cycle, such as in medicine, student mobilities can last a maximum of 24 months. Participation in short-term and long-term mobilities, studies and traineeships within one level of study are added up and may not exceed 12/24 months, including traineeships for recent graduates.

Is this type of mobility available for recent graduates?: No

Obligations: during a BIP mobility, it is necessary to obtain at least 3 ECTS credits.

Recognition: The earned credits will be recognized in full for the student upon return. After the mobility, **it is necessary to apply for the recognition of credits** according to the procedure at the individual faculties. For more information about criteria and procedures, contact your Erasmus [coordinators](#).

Grants:

Participants of a short-term mobility (5-30 days) are entitled to individual support for physical mobility days, including travel days, regardless of destination country:

1 st – 14 th day	15 th – 30 th day
€70 per day	€50 per day

Financing: Without limitation, the total length of mobility is financed.

[Contributions beyond the basic grant rates](#)

Anything extra?

Mobility participants with fewer opportunities are entitled to a one-time contribution above the basic rate in the amount of **€100** for physical mobility lasting 5-14 days.

Students can apply for the so-called "**green travel**" contribution. This is a one-time contribution of **EUR 50** in addition to the regular grant if the student uses: **train, bus, shared car, bicycle as a mode of transportation for his/her trip to and/or from mobility.**

Participants with fewer opportunities can be granted support for travel costs. Travel expenses are covered by a special scale of fixed amounts according to distance bands valid for the entire program:

Travel distance	Standard travel	Green travel
From 10 to 99 km:	23 EUR per participant	
From 100 to 499 km	180 EUR per participant	210 EUR per participant
From 500 to 1 999 km:	275 EUR per participant	320 EUR per participant
From 2 000 to 2 999 km:	360 EUR per participant	410 EUR per participant
From 3 000 to 3 999 km:	530 EUR per participant	610 EUR per participant
From 4 000 to 7 999 km:	820 EUR per participant	
8 000 km and more:	1 500 EUR per participant	

Other participants are not entitled to support for travel costs.

1.3

SHORT-TERM PhD MOBILITY STUDY



Takes place at: higher education institutions with an Erasmus charter, with which UPJŠ has an inter-institutional agreement

Place of mobility: It is possible to travel to any university with which your study field has an [inter-institutional agreement](#).



Length of the mobility: 5 to 30 days of physical mobility



Implementation period: until 31.7.2024



For whom: all duly enrolled full-time and part-time PhD students.

How many times can you travel?: The same student may participate in mobility periods totalling up to 12 months of physical mobility maximum per each cycle of study, independently of the number and type of mobility activities. In study programs combining first and second cycle, such as in medicine, student mobilities can last a maximum of 24 months. Participation in short-term and long-term mobilities, studies and traineeships within one level of study are added up and may not exceed 12/24 months, including traineeships for recent graduates.

Is this type of mobility available for recent graduates?: No

Obligations: for PhD students there are no rules for the min. number of acquired ECTS credits.

Recognition: The earned credits / completion of mobility can be recognized

for PhD students at the faculty/institute/department level. For more information about criteria and procedures, contact your Erasmus [coordinators](#) and thesis supervisors.

Rules and funding

- For the academic year 2023/2024, the university will allocate funds for **1 mobility for each study program in the PhD degree**, which can be implemented either as a study or as a traineeship.
- Every short-term mobility must meet **the criterion of minimal duration** (min. 5 days).
- The university will provide a grant to the participant of a short-term mobility up to a maximum amount **covering 10 days of physical mobility abroad**.
- Short-term mobility participants have the opportunity to implement mobilities whose duration is longer than the allocated financial support. In this case the so called combined grant is applied, i.e. with financial support from Erasmus+ resources combined with a period with zero grant. A mobility with a zero grant is also available to the students.
- One travel day before the first day of activity abroad and/or one travel day following the last day of activity abroad is added to the mobility period. These days are included in the calculation of individual support according to the scheme of **5 to 10 days of activity + 2 days of travel**.
- PhD students can implement **one mobility** with a duration of 5-10 days in the 2023/2024 academic year. In case of a longer mobility,

the participant implements his/her mobility with a combined grant, i.e. with the financial support from the Erasmus+ resources (first 5-10 days) combined with a period with zero grant (rest of the mobility). A mobility with a zero grant is also available to students.

Grants:

Participants of a short-term mobility (5-30 days) are entitled to individual support for physical mobility days, including travel days, regardless of destination country:

1 st – 14 th day	15 th – 30 th day
€70 per day	€50 per day

Financing: Without limitation, the total length of mobility is financed.

[Contributions beyond the basic grant rates](#)

Anything extra?

Mobility participants with fewer opportunities are entitled to a one-time contribution above the basic rate in the amount of **€100** for physical mobility lasting 5-14 days.

Students can apply for the so-called "**green travel**" contribution. This is a one-time contribution of **EUR 50** in addition to the regular grant if the student uses: **train, bus, shared car, bicycle as a mode of transportation for his/her trip to and/or from mobility.**

Participants with fewer opportunities can be granted support for travel costs. Travel expenses are covered by a special scale of fixed amounts according to distance bands valid for the entire program:

Travel distance	Standard travel	Green travel
From 10 to 99 km:	23 EUR per participant	
From 100 to 499 km	180 EUR per participant	210 EUR per participant
From 500 to 1 999 km:	275 EUR per participant	320 EUR per participant
From 2 000 to 2 999 km:	360 EUR per participant	410 EUR per participant
From 3 000 to 3 999 km:	530 EUR per participant	610 EUR per participant
From 4 000 to 7 999 km:	820 EUR per participant	
8 000 km and more:	1 500 EUR per participant	

Other participants are not entitled to support for travel costs.

1.3

SHORT-TERM BLENDED MOBILITY FOR 1st & 2nd CYCLE STUDENTS (STUDY)



Takes place at: higher education institutions with an Erasmus charter, with which UPJŠ has an inter-institutional agreement

Place of mobility: It is possible to travel to any university with which your study field has an [inter-institutional agreement](#).



Length of the mobility: 5 to 30 days of physical mobility + compulsory virtual part



Implementation period: until 31.7.2024



For whom: The short-term blended student mobilities are intended for doctoral (MUDr/MDDr), bachelor's (Bc) and master's (Mgr) students.

How many times can you travel?: The same student may participate in mobility periods totalling up to 12 months of physical mobility maximum per each cycle of study, independently of the number and type of mobility activities. In study

programs combining first and second cycle, such as in medicine, student mobilities can last a maximum of 24 months. Participation in short-term and long-term mobilities, studies and traineeships within one level of study are added up and may not exceed 12/24 months, including traineeships for recent graduates.

Is this type of mobility available for recent graduates?: No

Obligations: it is necessary to obtain at least 3 ECTS credits during the mobility.

Recognition: The earned credits will be recognized in full for the student upon return. After the mobility, **it is necessary to apply for the recognition of credits** according to the procedure at the individual faculties. For more information about criteria and procedures, contact your Erasmus [coordinators](#).

Rules and funding:

- A short-term blended mobility consists of a **short-term physical mobility** (study or traineeship) of students abroad (in a programme country) with a min. duration of 5 days and of a **mandatory virtual element**, while the volume, method and time of realization of the virtual part are freely adjustable.
- The implementation of the virtual element will be **ensured by the sending faculty/department/institute in cooperation with the receiving institution**. The sending faculty/department/institute is responsible for and confirms the quality of the implemented virtual activity.
- The short-term blended mobility **is intended for those students who cannot participate in a long-term physical mobility** (study or traineeship), e.g. because of their field of study or because they are from a disadvantaged background.

- It is the role of the faculties and the Rectorate to assess the appropriateness of the student mobility choices and to ensure that **long-term physical mobilities remain the norm**.
- The physical mobility of any short-term blended mobility must meet the criterion of minimal duration: from 5 to 30 days (excluding travel time) and must be combined with an obligatory virtual element.
- The university will provide the participant of a short-term blended mobility with a **grant** up to the amount **covering 5 days of physical mobility abroad**.
- Participants of a short-term blended mobility have the opportunity to implement mobilities, the duration of which is longer than the allocated financial support. In this case the so called **combined grant** is applied, i.e. with financial support from Erasmus+ resources combined with a period with zero grant. A mobility with a zero grant is also available to the students.
- One travel day before the first day of activity abroad and/or one travel day following the last day of activity abroad is added to the mobility period. These days are included in the calculation of individual support according to the scheme of **5 days of activity + 2 days of travel**.

Grants:

Participants of a short-term mobility (5-30 days) are entitled to individual support for physical mobility days, including travel days, regardless of destination country:

1 st – 14 th day	15 th – 30 th day
€70 per day	€50 per day

Financing: Without limitation, the total length of mobility is financed.

[Contributions beyond the basic grant rates](#)

Anything extra?

Mobility participants with fewer opportunities are entitled to a one-time contribution above the basic rate in the amount of **€100** for physical mobility lasting 5-14 days.

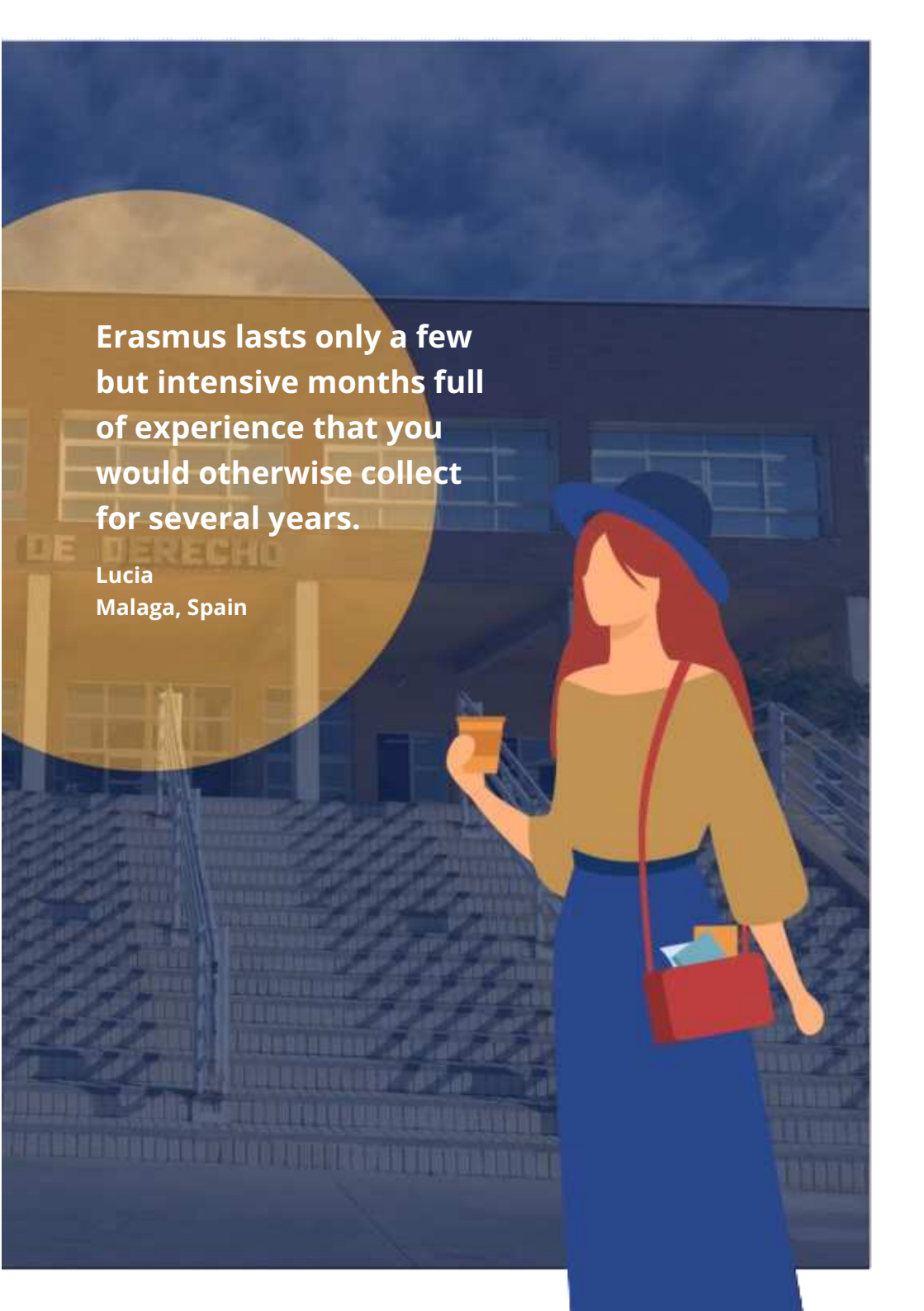
Students can apply for the so-called "**green travel**" contribution. This is a one-time contribution of **EUR 50** in addition to the regular grant if the student uses: **train, bus, shared car, bicycle as a mode of transportation for his/her trip to and/or from mobility.**

Participants with fewer opportunities can be granted support for travel costs. Travel expenses are covered by a special scale of fixed amounts according to distance bands valid for the entire program:

Travel distance	Standard travel	Green travel
From 10 to 99 km:	23 EUR per participant	
From 100 to 499 km	180 EUR per participant	210 EUR per participant
From 500 to 1 999 km:	275 EUR per participant	320 EUR per participant
From 2 000 to 2 999 km:	360 EUR per participant	410 EUR per participant
From 3 000 to 3 999 km:	530 EUR per participant	610 EUR per participant
From 4 000 to 7 999 km:	820 EUR per participant	
8 000 km and more:	1 500 EUR per participant	

Other participants are not entitled to support for travel costs.



A woman with long red hair, wearing a blue hat, a green long-sleeved top, and a blue skirt, is walking and holding a coffee cup. She has a red bag slung over her shoulder. The background shows a building with a tiled roof and a large circular graphic overlay. The text is positioned within this overlay.

**Erasmus lasts only a few
but intensive months full
of experience that you
would otherwise collect
for several years.**

Lucia
Malaga, Spain



02

TRAINEESHIP

It represents the activity of a mobility participant during a certain period of time in an organization located in a country participating in the Erasmus+ programme. The aim of which is to acquire or improve professional, language, communication, intercultural, social skills that increase the mobility participant's competitiveness on the labor market.



2.1

LONG-TERM MOBILITY TRAINEESHIP



Takes place at: a public or private organization operating in the labor market or in the fields of education, vocational training, youth, research and innovation, or at a higher education institution of a program country with an assigned Erasmus charter

Place of mobility: an **enterprise** or **organization** that is involved in the economic activity in the **public** or **private** sector, regardless of its size, legal form, economic sector in which it operates, including the social sphere of the economy. A company also includes a **higher education institution** (must be a holder of the ECHE Erasmus charter) and embassies.

The choice of institution is the responsibility of the student or the department/institute/faculty

An inter-institutional agreement between the receiving university and UPJŠ is **not required** for the implementation of a traineeship



Length of mobility: min. 2 months and a maximum of 12 months for each level of study



Implementation period: until 30.6.2024



For whom: for students of all study cycles and years, and for recent graduates

Types of traineeships: long-term **professional** internship with min. duration of 2 months, or a long-term internship **to improve digital skills** with min. duration of 2 months

How many times can you travel?: The same student may participate in mobility periods totalling up to 12 months of physical mobility maximum per each cycle of study, independently of the number and type of mobility activities. In study programs combining first and second cycle, such as in medicine, student mobilities can last a maximum of 24 months. Participation in short-term and long-term mobilities, studies and traineeships within one level of study are added up and may not exceed 12/24 months, including traineeships for recent graduates.

Is this mobility type available for recent graduates?: Yes, but the mobility must be

implemented within 12 months after your graduation. The selection for a recent graduate traineeship must take place during the last year of your study.

Obligations: The traineeship should be implemented on a "full-time" basis. The earned credits will be recognized in full for the student upon return. After the mobility, it is necessary **to apply for the recognition of credits** according to the procedure at the individual faculties. For more information about criteria and procedures, contact your Erasmus [coordinators](#).

Recognition: The student can receive ECTS credits for a traineeship that is part of the study plan or even if it is voluntary. If the student does not get ECTS credits at the faculty level (which we need to be informed about!) after finishing the mobility, we will allocate 3 ECTS credits for the Erasmus+ traineeship at the university level. The participants of recent graduate mobilities do not receive credits, as they no longer have a student status.

Grants:

Target country	Monthly traineeship grant
Denmark, Finland, Ireland, Iceland, Liechtenstein, Luxembourg, Norway, Sweden, Belgium, Cyprus, France, Greece, Netherlands, Malta, Germany, Portugal, Austria, Spain, Italy	€720
Bulgaria, Croatia, Czech Republic, Estonia, Lithuania, Latvia, Hungary, Slovenia, Poland, Romania, North Macedonia, Serbia, Turkey	€670

Funding: There are **no limitations for students**, the whole duration of the mobility is financed. **Graduates** will be provided with a grant of **a maximum amount covering 2 months of physical mobility abroad**.

Anything extra?

Students with fewer opportunities can receive an additional contribution above the level of study grants in the amount of **EUR 250** per month.

Students can apply for the so-called "**green travel**" contribution. This is a one-time contribution of **EUR 50** in addition to the regular grant if the student uses: train, bus, shared car, bicycle as a mode of transportation for his/her trip to and/or from the mobility.

2.2

SHORT-TERM PhD MOBILITY TRAINEESHIP



Takes place at: a public or private organization operating in the labor market or in the fields of education, vocational training, youth, research and innovation, or at a higher education institution of a program country with an assigned Erasmus charter

Place of mobility: an **enterprise** or **organization** that is involved in the economic activity in the **public** or **private** sector, regardless of its size, legal form, economic sector in which it operates, including the social sphere of the economy. A company also includes a **higher education institution** (must be a holder of the ECHE Erasmus charter) and embassies.

The choice of institution is the responsibility of the student or the department/institute/faculty

An inter-institutional agreement between the receiving university and UPJŠ is not required for the implementation of a traineeship



Length of mobility: 5 to 30 days of physical mobility



Implementation period: until 31.7.2024



For whom: all duly enrolled full-time and part-time PhD students.

How many times can you travel?: The same student may participate in mobility periods totalling up to 12 months of physical mobility maximum per each cycle of study, independently of the number and type of mobility activities. In study programs combining first and second cycle, such as in medicine, student mobilities can last a maximum of 24 months. Participation in short-term and long-term mobilities, studies and

traineeships within one level of study are added up and may not exceed 12/24 months, including traineeships for recent graduates.

Is this mobility type available for recent graduates?: No

Obligations: for PhD students there are no rules for the min. number of acquired ECTS credits.

Recognition: The earned credits / completion of mobility can be recognized for PhD students at the faculty/institute/department level. For more information about criteria and procedures, contact your Erasmus [coordinators](#) and thesis supervisors.

Rules and funding

- For the academic year 2023/2024, the university will allocate funds for **1 mobility for each study program in the PhD degree**, which can be implemented either as a study or as a traineeship.
- Every short-term mobility must meet **the criterion of minimal duration** (min. 5 days).

- The university will provide a grant to the participant of a short-term mobility up to a maximum amount **covering 10 days of physical mobility abroad**.
- Short-term mobility participants have the opportunity to implement mobilities whose duration is longer than the allocated financial support. In this case the so called combined grant is applied, i.e. with financial support from Erasmus+ resources combined with a period with zero grant. A mobility with a zero grant is also available to the students.
- One travel day before the first day of activity abroad and/or one travel day following the last day of activity abroad is added to the mobility period. These days are included in the calculation of individual support according to the scheme of **5 to 10 days of activity + 2 days of travel**.
- PhD students can implement **one mobility** with a duration of 5-10 days in the 2023/2024 academic year. In case of a longer mobility, the participant implements his/her mobility with a combined grant, i.e. with the financial support from the Erasmus+ resources (first 5-10 days) combined with a period with zero grant (rest of the mobility). A mobility with a zero grant is also available to students.

Grants:

Participants of a short-term mobility (5-30 days) are entitled to individual support for physical mobility days, including travel days, regardless of destination country:

1 st – 14 th day	15 th – 30 th day
€70 per day	€50 per day

Anything extra?

Mobility participants with fewer opportunities are entitled to a one-time contribution above the basic rate in the amount of **€100** for physical mobility lasting 5-14 days.

Students can apply for the so-called "**green travel**" contribution. This is a one-time contribution of **EUR 50** in addition to the regular grant if the student uses: **train, bus, shared car, bicycle as a mode of transportation for his/her trip to and/or from mobility.**

Participants with fewer opportunities can be granted support for travel costs. Travel expenses are covered by a special scale of fixed amounts according to distance bands valid for the entire program:

Travel distance	Standard travel	Green travel
From 10 to 99 km:	23 EUR per participant	
From 100 to 499 km	180 EUR per participant	210 EUR per participant
From 500 to 1 999 km:	275 EUR per participant	320 EUR per participant
From 2 000 to 2 999 km:	360 EUR per participant	410 EUR per participant
From 3 000 to 3 999 km:	530 EUR per participant	610 EUR per participant
From 4 000 to 7 999 km:	820 EUR per participant	
8 000 km and more:	1 500 EUR per participant	

Other participants are not entitled to support for travel costs.

2.3

SHORT-TERM BLENDED MOBILITY FOR 1st & 2nd CYCLE STUDENTS (TRAINEESHIP)



Takes place at: a public or private organization operating in the labor market or in the fields of education, vocational training, youth, research and innovation, and at a higher education institution of a program country with an assigned Erasmus charter

Place of mobility: an **enterprise** or **organization** that is involved in the economic activity in the **public** or **private** sector, regardless of its size, legal form, economic sector in which it operates, including the social sphere of the economy. A company also includes a **higher**

education institution (must be a holder of the ECHE Erasmus charter) and embassies.

The choice of institution is the responsibility of the student or the department/institute/faculty

An inter-institutional agreement between the receiving university and UPJŠ is **not required** for the implementation of a traineeship



Length of mobility: 5 to 30 days of physical mobility



Implementation period: until 31.7.2024



For whom: The short-term blended student mobilities are intended for doctoral (MUDr/MDDr), bachelor's (Bc) and master's (Mgr) students.

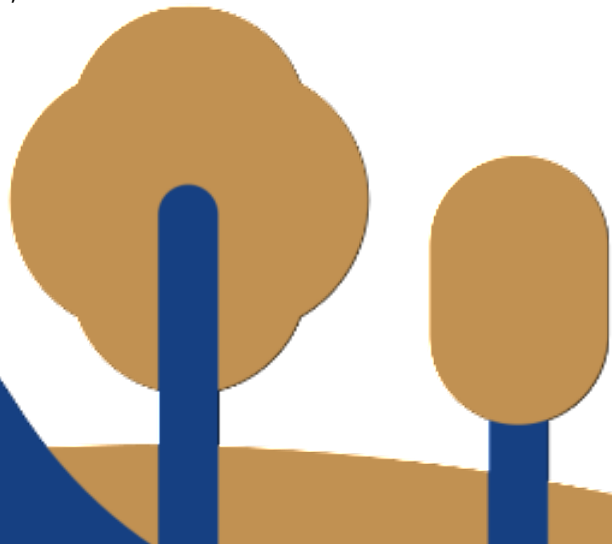
How many times can you travel?: The same student may participate in mobility periods totalling up to 12 months of physical mobility maximum per each cycle of study, independently of the number and type of mobility activities. In study programs combining first and second cycle, such as in medicine,

student mobilities can last a maximum of 24 months. Participation in short-term and long-term mobilities, studies and traineeships within one level of study are added up and may not exceed 12/24 months, including traineeships for recent graduates.

Is this mobility type available for recent graduates?: No

Obligations: it is necessary to obtain at least **3 ECTS credits** during the mobility.

Recognition: The earned credits will be recognized in full for the student upon return. After the mobility, **it is necessary to apply for the recognition of credits** according to the procedure at the individual faculties. For more information about criteria and procedures, contact your Erasmus [coordinators](#).



Rules and funding:

- A short-term blended mobility consists of a **short-term physical mobility** (study or traineeship) of students abroad (in a programme country) with a min. duration of 5 days and of a **mandatory virtual element**, while the volume, method and time of realization of the virtual part are freely adjustable.
- The implementation of the virtual element will be **ensured by the sending faculty/department/institute in cooperation with the receiving institution**. The sending faculty/department/institute is responsible for and confirms the quality of the implemented virtual activity.
- The short-term blended mobility **is intended for those students who cannot participate in a long-term physical mobility** (study or traineeship), e.g. because of their field of study or because they are from a disadvantaged background.
- It is the role of the faculties and the Rectorate to assess the appropriateness of the student mobility choices and to ensure that **long-term physical mobilities remain the norm**.
- The physical mobility of any short-term blended mobility must meet the criterion of minimal duration: from 5 to 30 days (excluding travel time) and must be combined with an obligatory virtual element.
- The university will provide the participant of a short-term blended mobility with a **grant** up to the amount **covering 5 days of physical mobility abroad**.
- Participants of a short-term blended mobility have the opportunity to implement mobilities, the duration of which is longer than the allocated financial support. In this case the so called **combined grant** is applied, i.e. with financial support from Erasmus+

resources combined with a period with zero grant. A mobility with a zero grant is also available to the students.

- One travel day before the first day of activity abroad and/or one travel day following the last day of activity abroad is added to the mobility period. These days are included in the calculation of individual support according to the scheme of **5 days of activity + 2 days of travel**.

Grants:

Participants of a short-term mobility (5-30 days) are entitled to individual support for physical mobility days, including travel days, regardless of destination country:

1 st – 14 th day	15 th – 30 th day
€70 per day	€50 per day

[Contributions beyond the basic grant rates](#)

Anything extra?

Mobility participants with fewer opportunities are entitled to a one-time contribution above the basic rate in the amount of **€100** for physical mobility lasting 5-14 days.

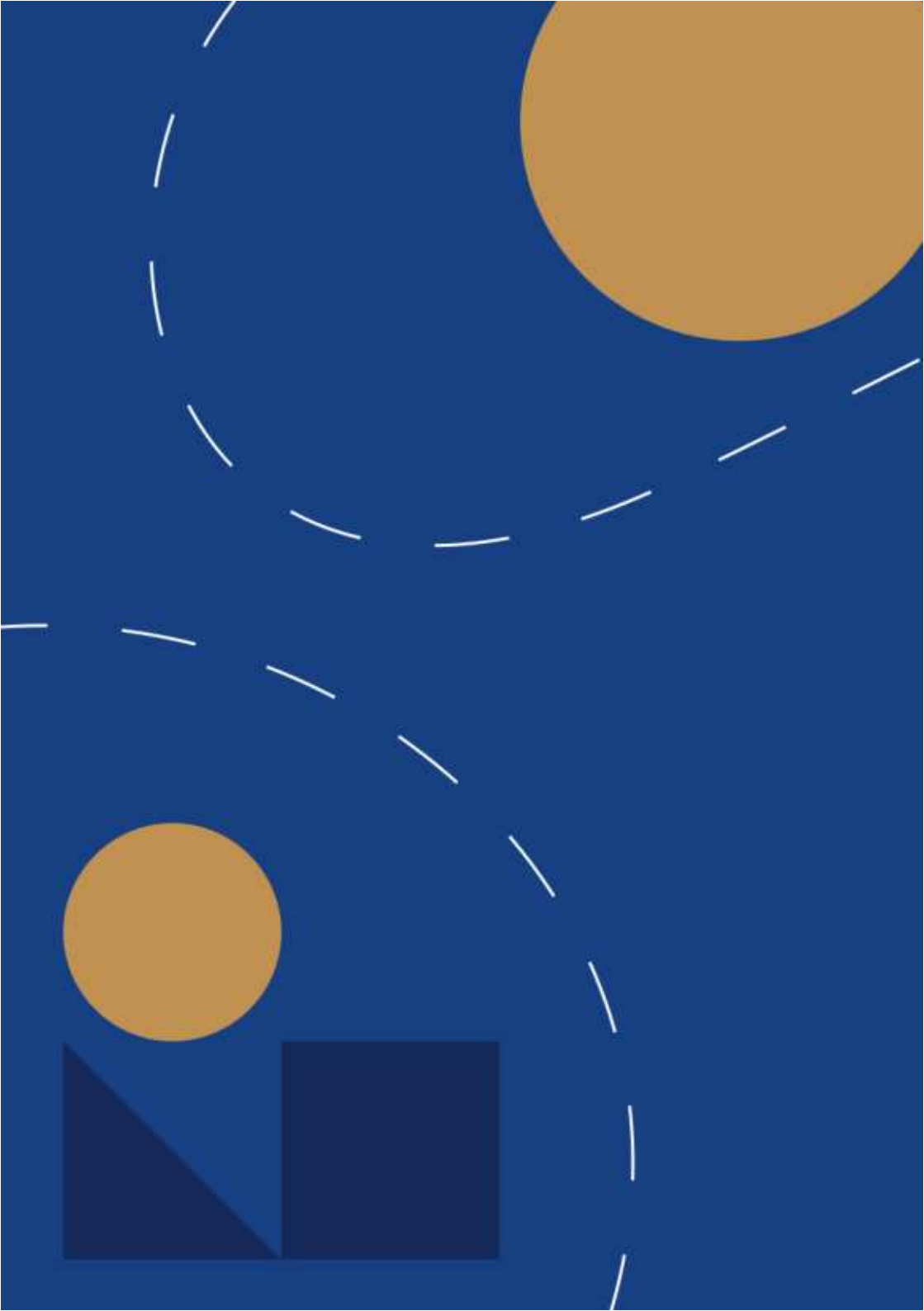
Students can apply for the so-called "**green travel**" contribution. This is a one-time contribution of **EUR 50** in addition to the regular grant if the student uses: **train, bus, shared car, bicycle as a mode of transportation for his/her trip to and/or from mobility.**

Participants with fewer opportunities can be granted support for travel costs. Travel expenses are covered by a special scale of fixed amounts according to distance bands valid for the entire program:

Travel distance	Standard travel	Green travel
From 10 to 99 km:	23 EUR per participant	
From 100 to 499 km	180 EUR per participant	210 EUR per participant
From 500 to 1 999 km:	275 EUR per participant	320 EUR per participant
From 2 000 to 2 999 km:	360 EUR per participant	410 EUR per participant
From 3 000 to 3 999 km:	530 EUR per participant	610 EUR per participant
From 4 000 to 7 999 km:	820 EUR per participant	
8 000 km and more:	1 500 EUR per participant	

Other participants are not entitled to support for travel costs.







03

**APPLICATION
DEADLINES**

A/ Long-term mobility - study: until 9.10.2023

B/ Long-term mobility - traineeship:

	Proposed deadline for the submission of applications at the individual faculties/departments/institutes*:	Earliest possible start date:
1 st stage	09.10.2023	23.10.2023
2 nd stage	12.02.2024	26.02.2024

C/ Blended intensive programmes:

	Proposed deadline for the submission of applications at the individual faculties/departments/institutes*:	Earliest possible start date:
1 st stage	09.10.2023	23.10.2023
2 nd stage	12.02.2024	26.02.2024
3 rd stage	06.05.2024	20.05.2024



IMPORTANT

*The dates and conditions of the call and selection will be specified by the faculties/institutes/departments. For more information, please contact your faculty / department / institute coordinator.

D/Short-term PhD mobility – study and traineeship:

	Proposed deadline for the submission of applications at the individual faculties/departments/institutes*:	Earliest possible start date:
1 st stage	22.09.2023	02.10.2023
2 nd stage	09.10.2023	23.10.2023
3 rd stage	12.02.2024	26.02.2024
4 th stage	06.05.2024	20.05.2024

E/ Short-term blended mobilities of 1st and 2nd cycle students – study and traineeship:

	Proposed deadline for the submission of applications at the individual faculties/departments/institutes*:	Earliest possible start date:
1 st stage	09.10.2023	23.10.2023
2 nd stage	12.02.2024	26.02.2024
3 rd stage	06.05.2024	20.05.2024



EXPERIENCE THE NEW OLS!

A completely new online language support awaits you (OLS)!

It provides a range of interactive and engaging language activities that will help you to learn a new language or improve a language you have already studied. The best part is that OLS is designed to meet the specific needs of each learner.

This means that you will enjoy a unique language learning experience that you can take at your own pace.

So what are you waiting for? Whether it's learning the basics of

French or mastering German at native level, click here to get started.

It only takes a few seconds to set up your profile and start your language learning journey!

Our introductory module will quickly guide you through the process of creating an account that you can use to access OLS and many other short courses on the EU Academy platform.

https://www.eacea.ec.europa.eu/about-eacea/eacea-platforms_en

See you in the new OLS



MANAGE YOUR MOBILITY COMFORTABLY WITH YOUR SMARTPHONE!

The Erasmus+ App is available in all languages of the EU, and it allows you to manage your Learning Agreement.

Furthermore, you can find there practical information from every-day life shared by other mobility participants. The app is available for Android and iOS.

What are you waiting for?





www.upjs.sk/en/erasmus+

