

DIPLOMA THESIS

Instructions

Format requirements:

- font: Times New Roman, size 12, black
- spacing: 1.5 lines
- text aligned with both margins
- scope: 90 000 – 126 000 characters, i.e. 50 to 70 standard pages

FIGURES

- should be marked as: Fig. 1 Title
- figure and its title must be centred in the text
- title of the figure is stated below the figure
- title must include the source written in brackets (same style as you are using in the main text); for the images given to you by your supervisor, please state Department of Forensic Medicine UPJS FM as a source

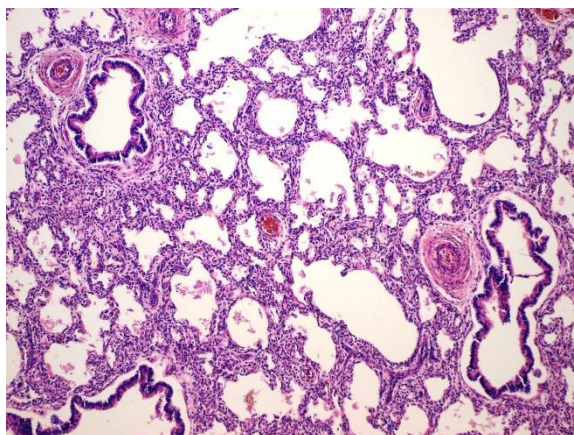


Fig. 1 Title (source)

TABLES

- should be marked as: Tab. 1 Title
- table and its title must be centred in the text
- title of the table is stated above the table
- source, written in brackets (same style as you are using in the main text), is written below the table

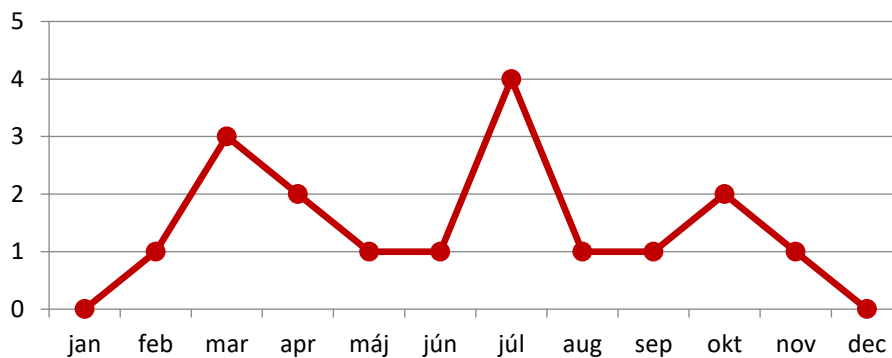
Tab. 1 Title

Obdobie vývoja	Štádium vývoja	Trvanie
Embryonálne	<i>Embryonálne</i>	4. – 8. týždeň
Fetálne	<i>Pseudoglandulárne</i>	7. – 17. týždeň
	<i>Kanalikulárne</i>	17. – 26. týždeň
	<i>Sakulárne</i>	26. – 36. týždeň
Postnatálne	<i>Alveolarizácia – prvá fáza</i>	36. – 3. rok
	<i>Alveolarizácia – druhá fáza</i>	2. – 17./21. rok
	<i>Dozrievanie mikrocirkulácie</i>	pôrod – 3./21. rok

(source)

GRAPHS

- should be marked as: Graph 1 Title
- graph and its title must be centred in the text
- title of the graph is stated below the graph
- title must include the source written in brackets (same style as you are using in the main text)



Graph 1 Title (source)

REFERENCES

- there are two methods you can chose from, when referring to literature sources in the main text:
 - author-date system: ... (Walker 2018).
 - number system: ... (1).

Format requirements (different than the main text):

- text aligned to the left with
- spacing: 1.0
- one empty line between every reference

The citations rules are available at:

https://www.upjs.sk/app/uploads/sites/16/2024/02/10-22_Lichnerova_Bellerova-1.pdf